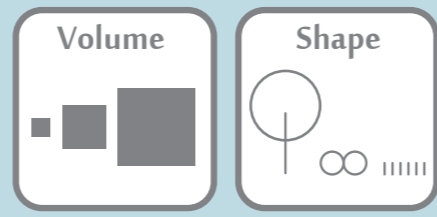
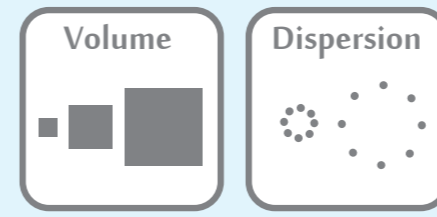


Adaptive Circular Cities

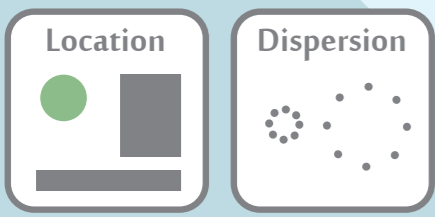
Design principles for health-supporting green infrastructure



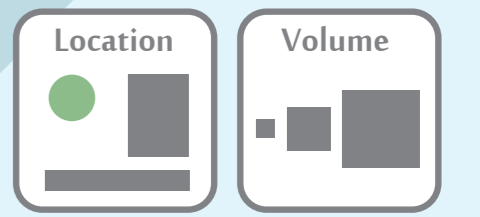
The more urban green with maximum leaf surface the better



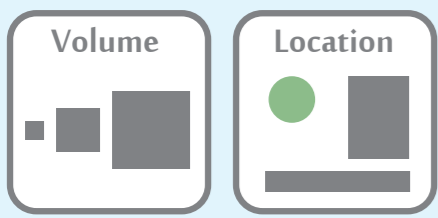
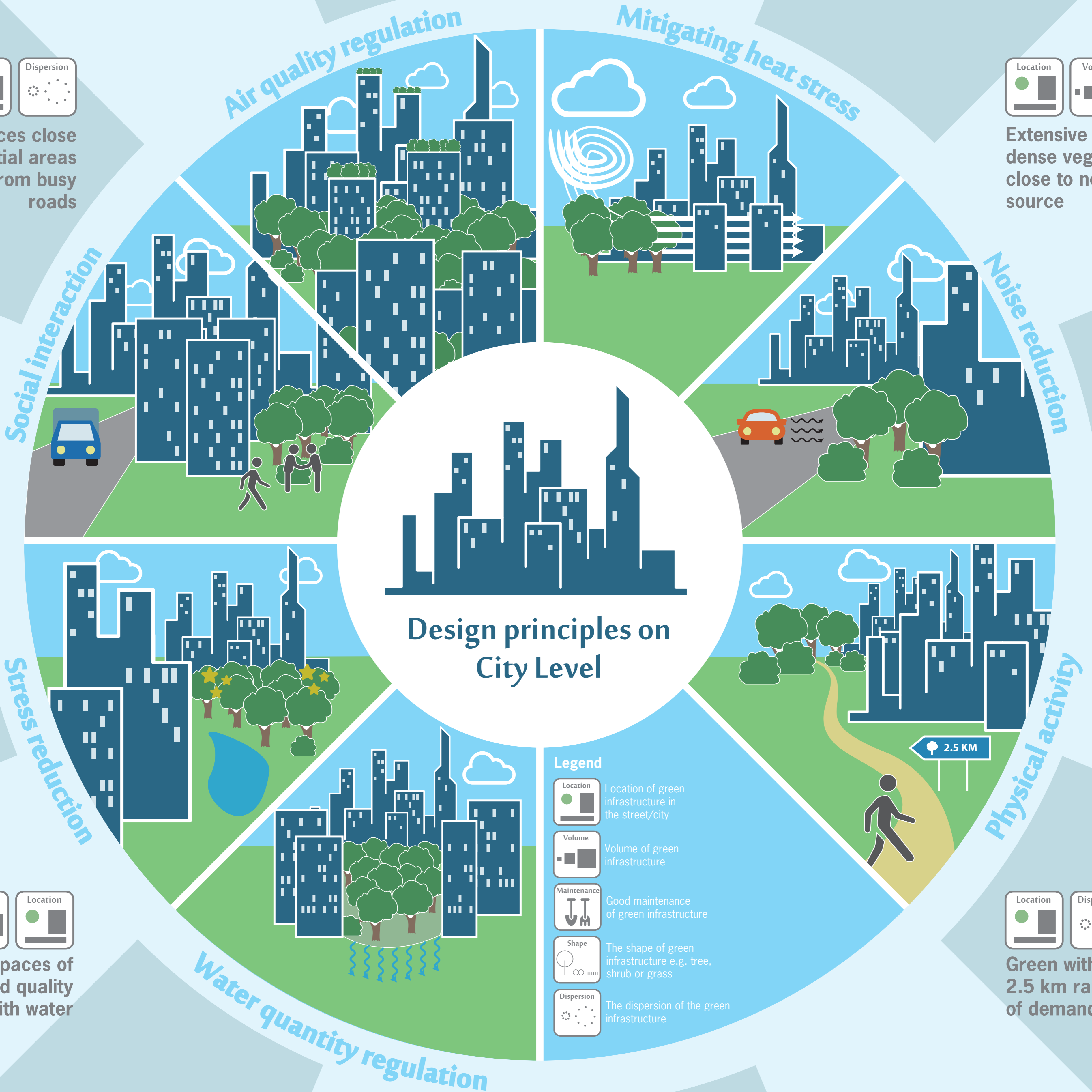
Whether dispersed or concentrated the more urban green the better preferably on windward side



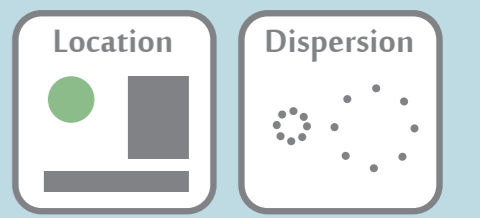
Green spaces close to residential areas away from busy roads



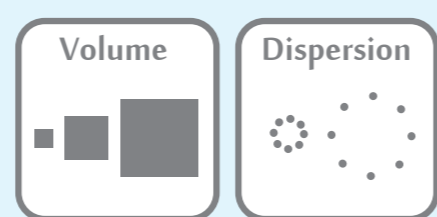
Extensive and dense vegetation close to noise source



Green spaces of good quality combined with water



Green within 2.5 km range of demand



Parks or other green areas with depressions